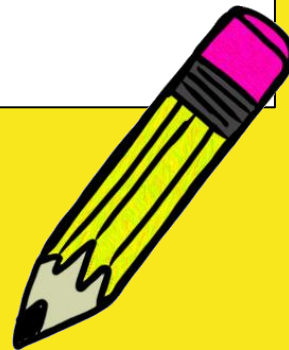




*Little Professors  
@ Westwood Primary School*





# Contents

1. Who We Are
2. LP Vision and Mission
3. A Day in LP
4. Things to Bring Daily
5. Healthy Meals in School Programme
6. Menu
7. Homework Supervision Policy
8. Reporting Process
9. Dismissal Process
10. Closure Dates
11. Operating Hours
12. SCC Fees
13. SCC Indication of interest
- 12.. Contact Us





## WHO WE ARE

## About Little Professors

- Little Professors have been operating Student Care services since 2005 and KCare services since 2019.
- We provide Care services to more than 1500 children island wide.
- We believe in balancing both nature and nurture in providing our children with a holistic experience.
- We provide a safe and conducive environment for our children to play, explore and discover.



## About Little Professors

### OUR VISION

To be a premier Student & KCare Centre that nurtures children by developing in them a strong character, a positive attitude and sound ethics, where every child experience unconditional love.

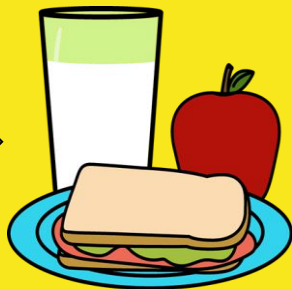
### OUR MISSION

- Quality Care
- Holistic Approach
- Social Responsibility

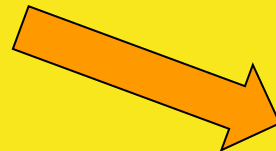
REPORTING



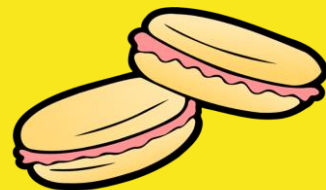
LUNCH



HOMEWORK



TEABREAK



LP  
PROGRAMMES



READING &  
RECREATION



HOME



\*THIS TIMETABLE IS FOR REFERENCE ONLY



# School Day Timetable

Time (Hrs)	Monday	Tuesday	Wednesday	Thursday	Friday
Dismissal to 1400	Lunch				
1400 to 1430	7 Habits Assembly Talk	Heads Down/ Wash Up			
1430 to 1500	Heads Down/ Wash Up				
1500 to 1600	Homework/ Spelling/ Self Revision				
1600 to 1630	Tea Break				
1630 to 1800	BOKS Lab	Art Lab	Creative Yoga Lab	Character Counts! Lab	STEM Lab
1800 to 1830	Community Gardening/ Reading and Recreation				
1830 onwards	Home Sweet Home				

\*THIS TIMETABLE IS FOR REFERENCE ONLY



# Full Day Timetable

Time (Hrs)	Monday	Tuesday	Wednesday	Thursday	Friday
0730 - 0830	Arrival				
0830 - 0900	Breakfast				
0900 - 1000	Community Gardening				
1000 - 1100	GoNoodle				
1100 - 1230	Cooking Lab	Art Lab	Creative Yoga Lab	Kitchen Science Lab	STEM Lab
1230 - 1300	Lunch				
1300 - 1330	Heads Down/ Napping				
1330 - 1430	Homework Help/ Self Revision/ Quiet Reading Time				
1430 - 1600	BOKS Lab	Speech and Drama Lab	Craft Lab	Essential Life Skills Lab	BOKS Lab
1600 - 1630	Tea Break				
1630 - 1830	Indoor/Outdoor/ Ball Games/ Reading and Recreation				



Things to bring  
to LP daily

Attire: Little Professors

Tshirt + School Skirt/Shorts

1.Communication Book

2.School/Parents Homework  
(if any)

3.Thermometer

4.Water bottle





Things to bring  
to LP daily

Your child will be given a  
Communication Book.  
Please ensure that he/she  
brings it to school daily to  
facilitate communication  
between parents and the  
teachers.



Primary 1 to 6

## Reporting Process (1st week of school)

P1 to P6 Students who are enrolled in Little Professors will be waiting for our LP teachers in their respective classrooms.

Our LP teachers will be fetching the students from their classrooms accordingly and will facilitate the students for the day.



After 1st week of school

## Reporting Process to student care

LP Students will report to their  
respective SCC Classroom to  
commence their daily routine.



\*MENU IS FOR REFERENCE ONLY

# Menu

Menu may be subjected

## Menu

January: Week 3

	Mon	Tue	Wed	Thu	Fri
Lunch	Butter Rice	Steamed Rice with Veggie Bites	Sin Chew Bee Hoon	Fragrant Jasmine Rice	Butter Rice
	Honey Glazed Grilled Chicken	Poached Fish with Black Sauce	Crispy Chicken Nugget	Black Bean Paste Chicken	Fish Fillet with Tartar Sauce
	Mixed Veggie with Potato	Steamed Tofu with Veggie	Stir Fried Cabbage with Mushroom	Nonya Chap Chye	Cauliflower with Tomato
Teabreak	Assorted Buns	Swiss Rolls	Wafer Sticks	Bread with Assorted Spreads	Seasonal Fruits

Our catered foods are halal and we also have vegetarian options.

*\*Kindly let us know upon registration if your child has any food allergies.*

## 1. Food in the 4 food groups:

- Brown rice &
- Wholemeal bread
- Fruit
- Vegetables
- Meat & others

## 2. Vegetables and Fruit in the following amounts:

- Vegetables: At least 2 dessert spoons
- Fruit: At least  $\frac{1}{2}$  serving

## Healthy Meals In School Programme



## Healthy Meals In School Programme

- 3. Use of lean meat
- 4. Less oil and salt
- 5. Wholemeal Bread at teabreaks





# Healthy Meals In School Programme





# Healthy Meals In School Programme



## Clean Plate Policy



## Healthy Meals In School Programme

Our SCC practices the clean plate policy where the students can ask for a second serving when they have finished all the food on their plate.

# Homework Supervision Policy

Our staff will:

- Monitor school homework closely
- Encourage students to complete homework and do self checking
- Encourage self-revision of school spelling



# Homework Supervision Policy

Our staff will NOT be:

- Doing homework for your child
- Teaching your child how to do the homework
- Checking for accuracy of homework questions



# YOGA LAB



# Little Professors Programmes

## STEM LAB

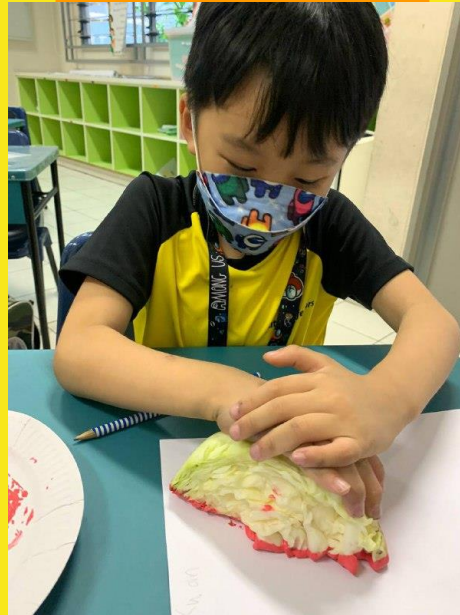


## BOKS LAB





ARTLAB



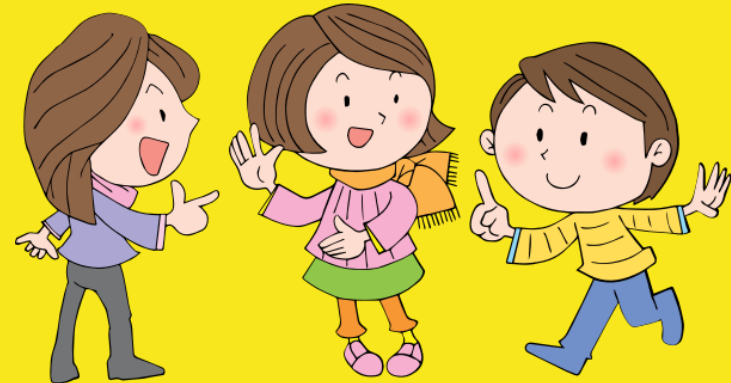
Little Professors  
Programmes



CHARACTER COUNTS LAB

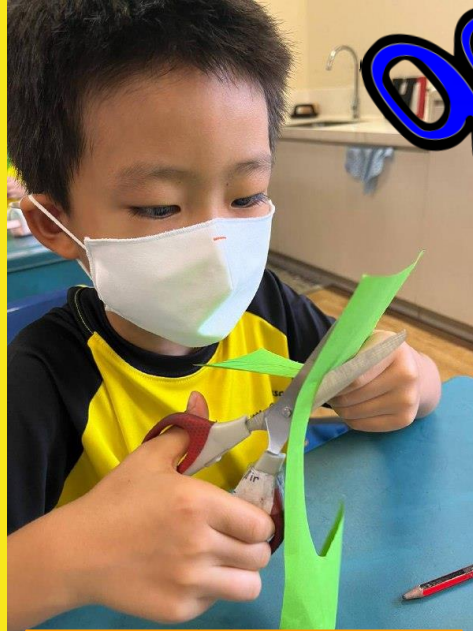
# Little Professors Programme(Holiday)

- COOKING LAB
- CRAFT LAB
- SPEECH AND DRAMA LAB
- LIFE SKILLS LAB
- KITCHEN SCIENCE LAB

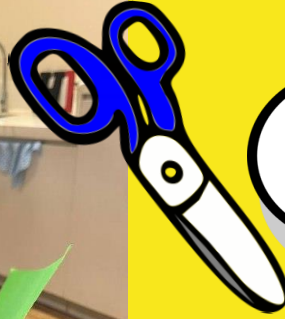




COOKING LAB



CRAFT LAB



# Little Professors Programme(Holiday)



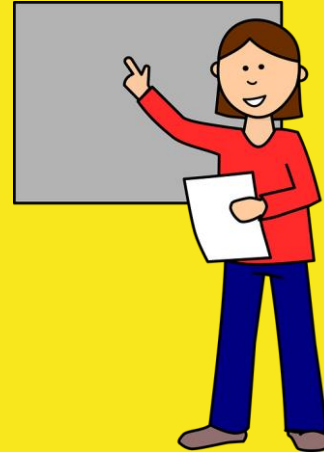
SPEECH AND DRAMA LAB

# Little Professors Programme(Holiday)

## KITCHEN SCIENCE LAB



## LIFE SKILL LAB



LP Dismissal will be facilitated via the main gate (security post).

Our LP staff will be stationed at the Gate, to help assist your child's dismissal. Authorised caregiver can inform the staff upon arrival.

Otherwise, authorised caregiver can whatsapp us 15 mins earlier and we will prepare your child for dismissal to the gate.

## Dismissal Process



In the event that an authorised caregiver is unable to pick your child, please inform us in advance via the communication book or call our main line, indicating the name of the person and his/her last 4 digits of NRIC number.

The alternate caregiver would need to produce identification for verification.

## Dismissal Process



## LATE PICK UP

- Our centre operates until 7 pm
- Pick-up after 7pm will incur late charges

## LATE CHARGES

- First 15 mins after centre is closed - \$10
- After 15 mins, additional \$5 per 15 mins

## Dismissal Process



# Operating Hours

Our operating hours are:

School days:

After school to 7.00 pm

School holidays:

7.30 am to 7.00 pm





Monthly Fees:  
\$230

SCC Fees

Monthly Student Care Fee	\$230	Before SCFA Subsidies, if any
Registration Fee	\$30	One-Time, Non Refundable
T-Shirts (\$15/Piece)	\$45	MSF Recommendation for uniform capped at 3 days requirement
Deposit	\$230	Refundable with one month written notice
Total Fee Payable	\$535	Payable upon registration



## Contact Us

Centre Phone Number:

**8606 1170** (Please call during our operating hours)

Kindly save our number to your contact list. You may wish to WhatsApp us for dismissal timings, report absence, reply to surveys or consent forms or if you need our team to give you a call.

Centre Email: **westwood@littleprofessors.com.sg**



Thank you